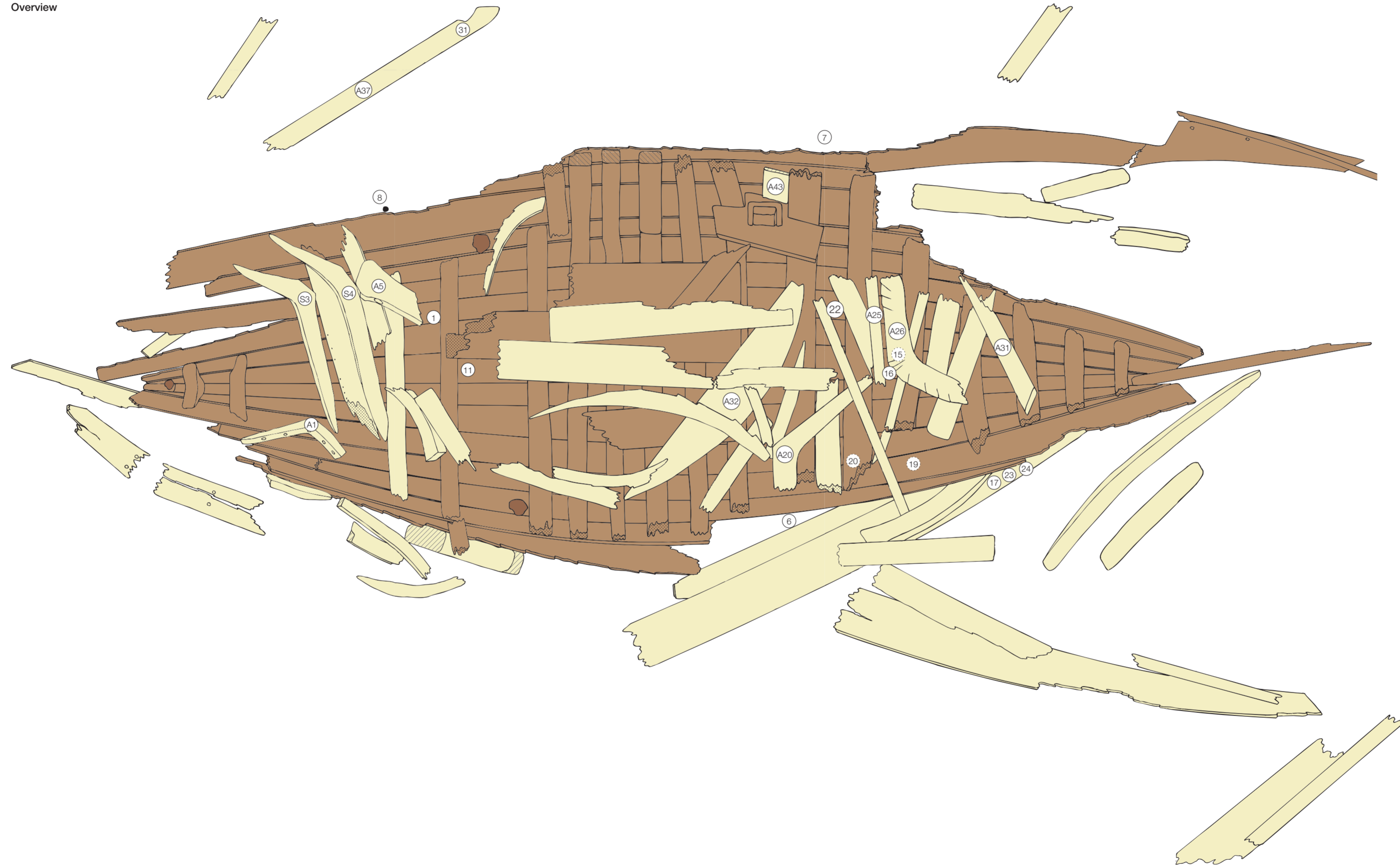


Overview



Legend

- Still joined-up timbers
- Detached timbers
- Scarfs, cross-cut wood
- Broken-off frame or plank
- A2 Detached part mentioned in the text
- 24 Frame number
- 17 Find number
- Erratic stone

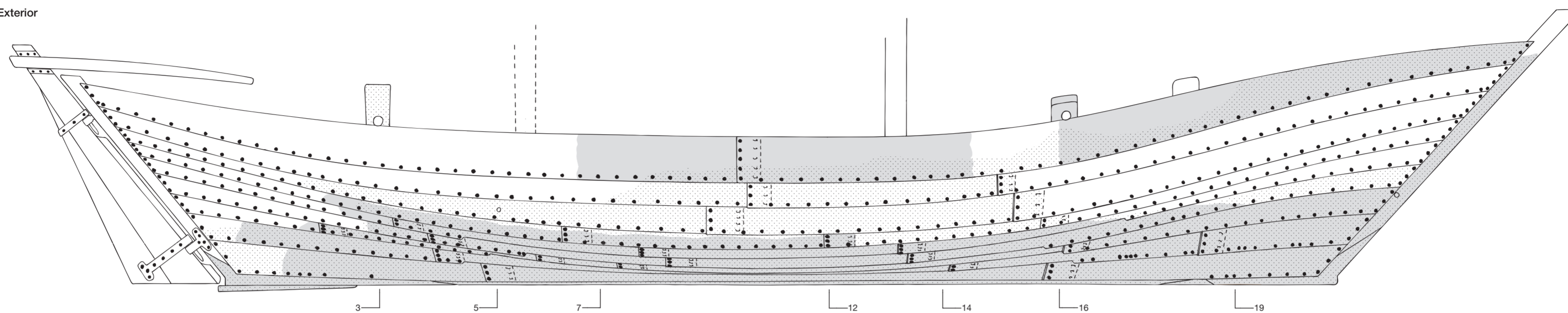
Field drawing

The wreck with detached timbers *in situ* and the distribution of finds.

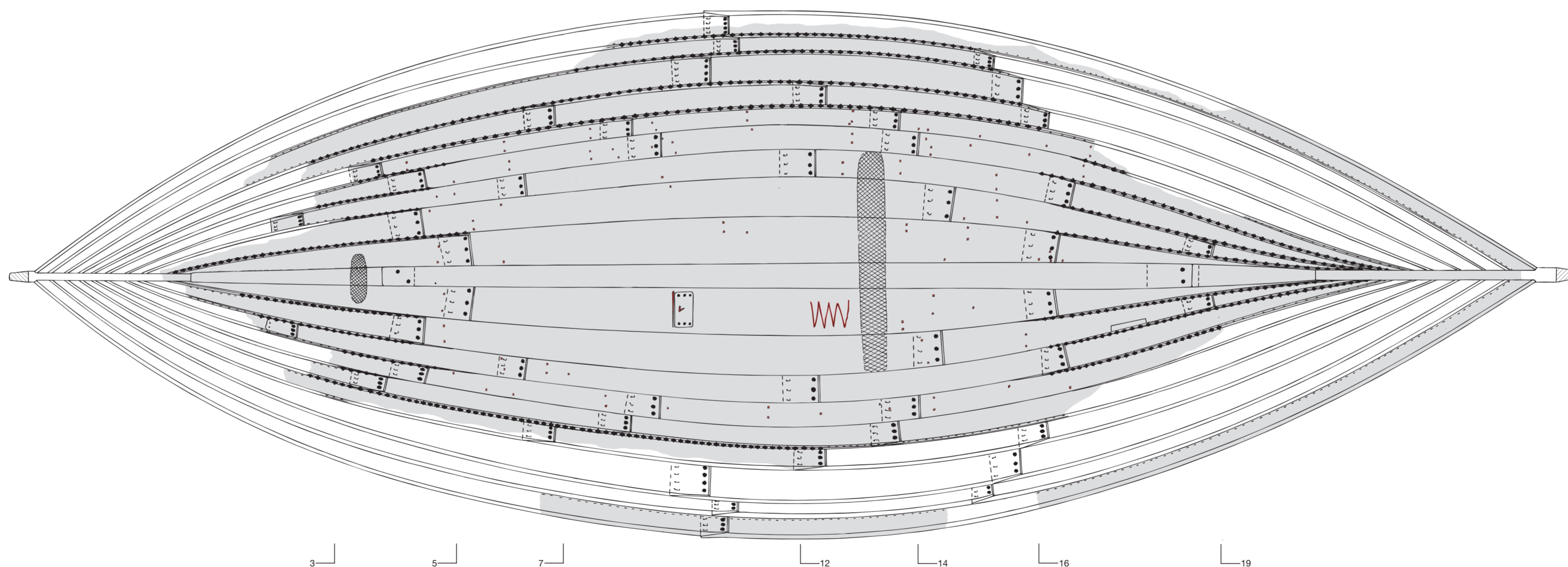
Scale

0 m  1 m

A. Exterior



B. Top view



**Legend**

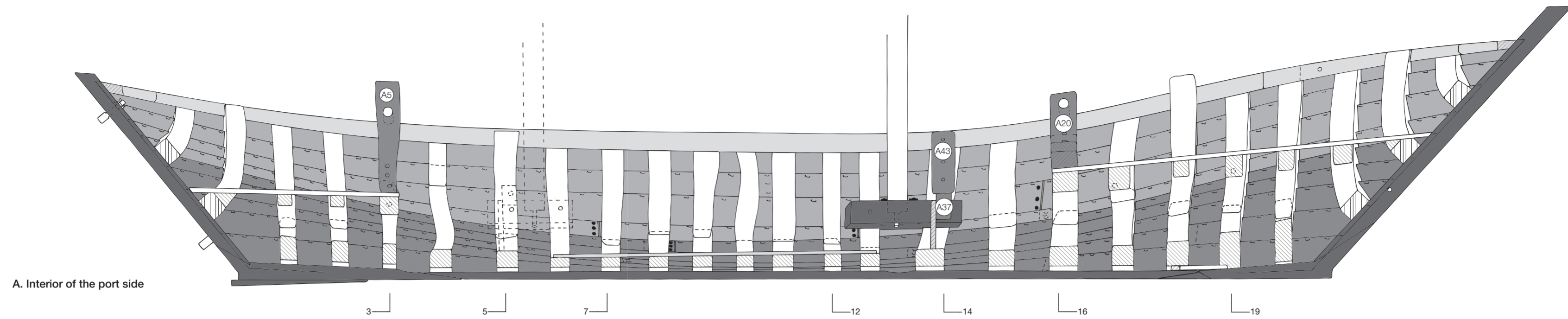
- Recovered timbers of the starboard side (in A); all recovered parts (in B)
- Recovered timbers of the port side (in A)
- Nailhole plugs left by temporary framing
- Area of abrasion by bailing or by the foot of the pump barrel
- Incised markings
- Scratched mark
- Frame number

**Reconstruction drawings**

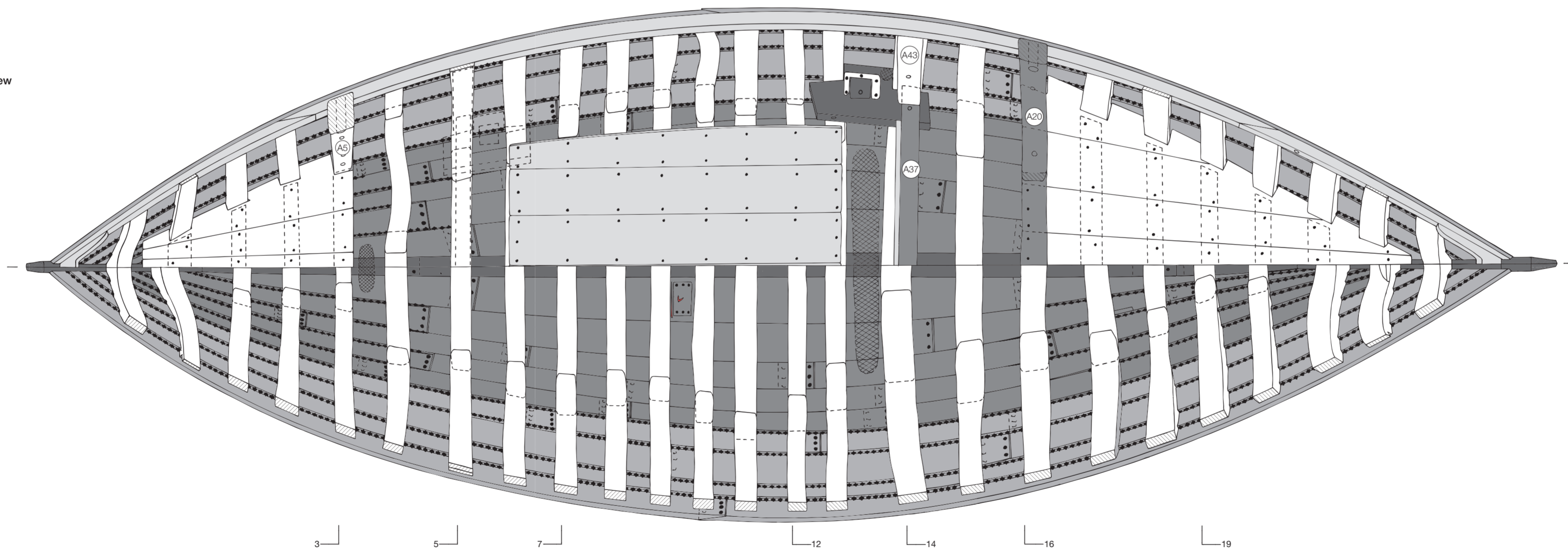
- A. Exterior of the starboard side, combining the recovered parts of the starboard and port sides.
- B. Top view of the shell, showing the recovered parts.

**Scale**







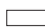







A. Interior of the port side



B. Top view

**Legend**

-  Keel plank, stern- and stem hooks, stern- and stemposts, skag, mortised sill
-  Bottom planking, (deck) knees with large holes, topside crossbeam, cross connection
-  Planking of the sides
-  Inwale, load-bed /workfloor
-  Frames, decks, deck beams
-  Cross-cut wood

-  Area abraded by a pump barrel/bailing drain
-  Detached timber
-  Incised markings
-  Frame number

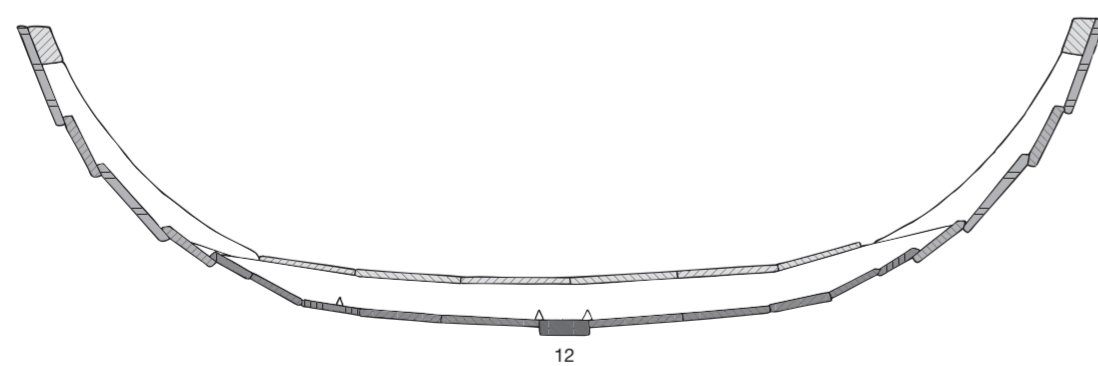
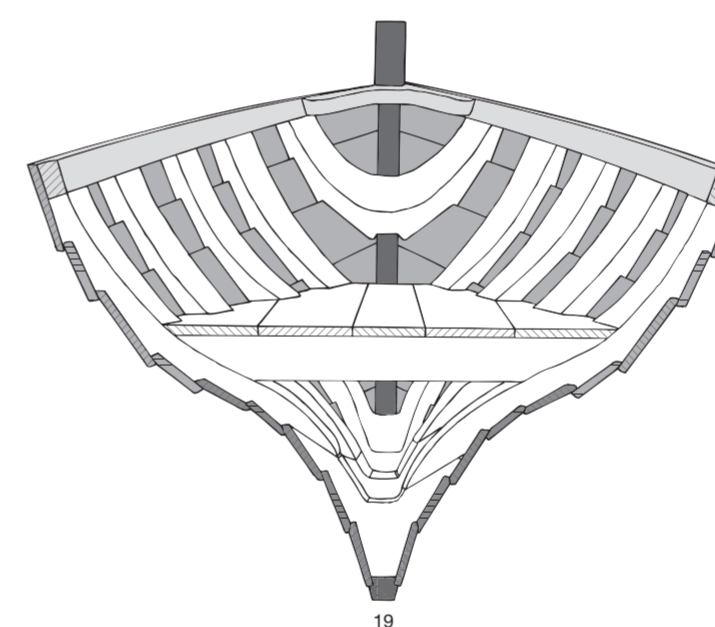
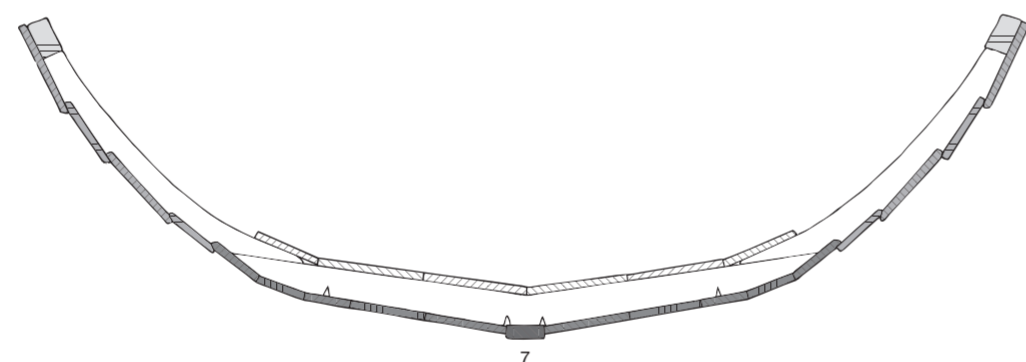
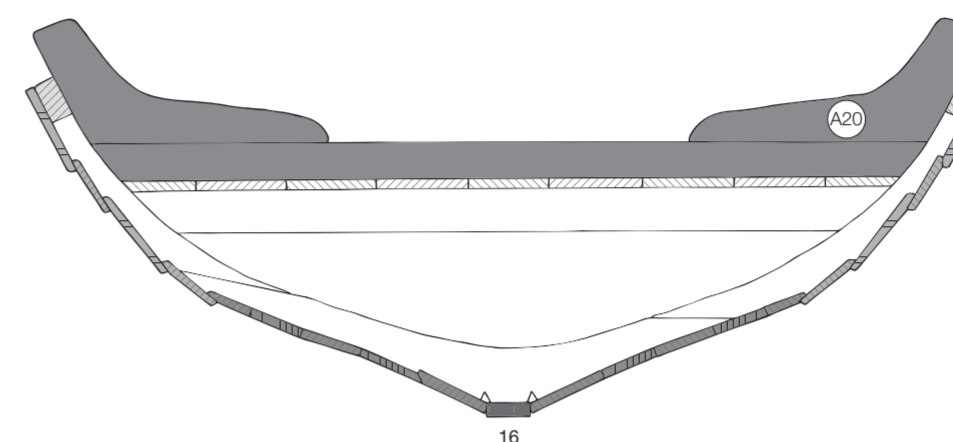
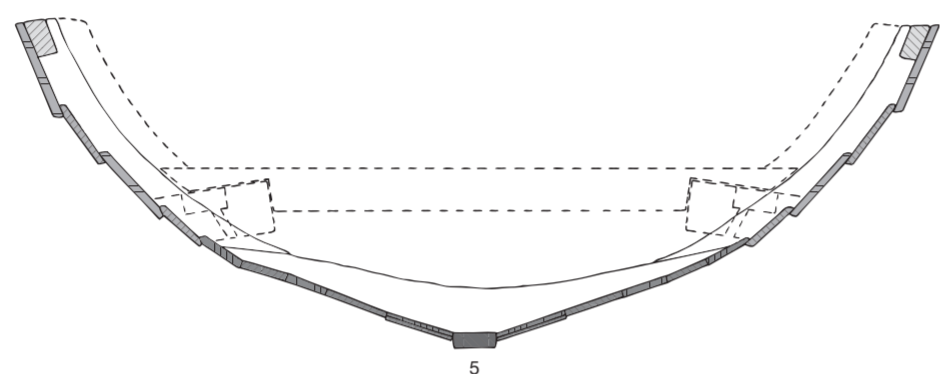
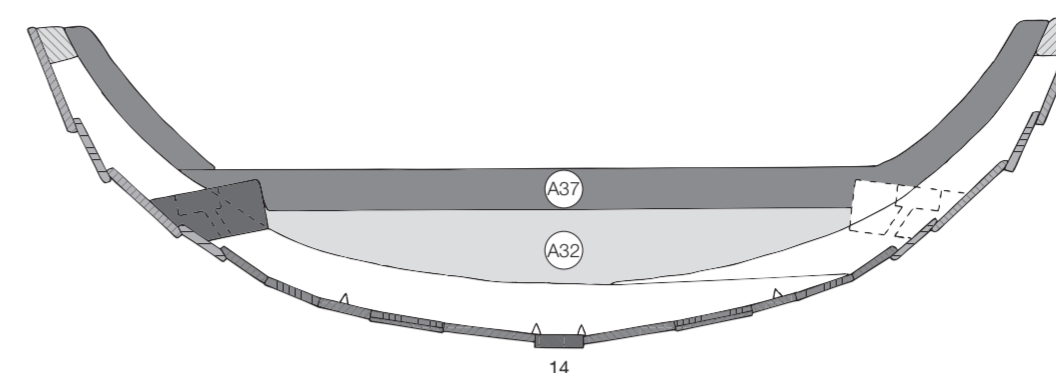
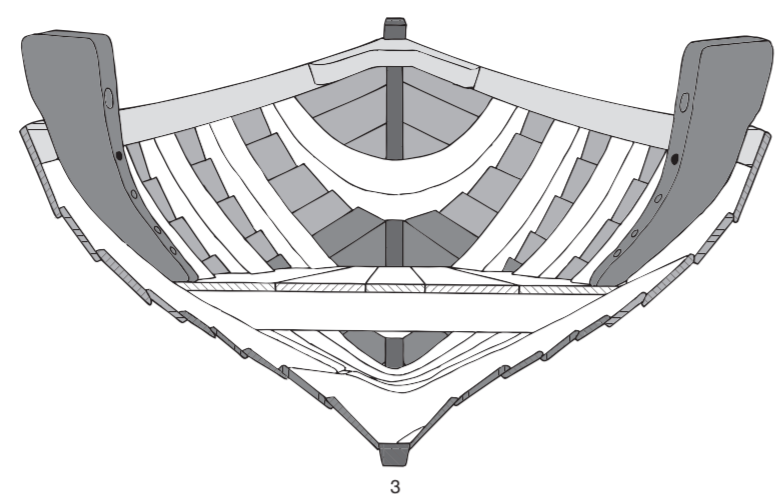
**Reconstruction drawings**

- A. Interior of the port side.
- B. Top view with the deck plan (port) and the frame plan (starboard).

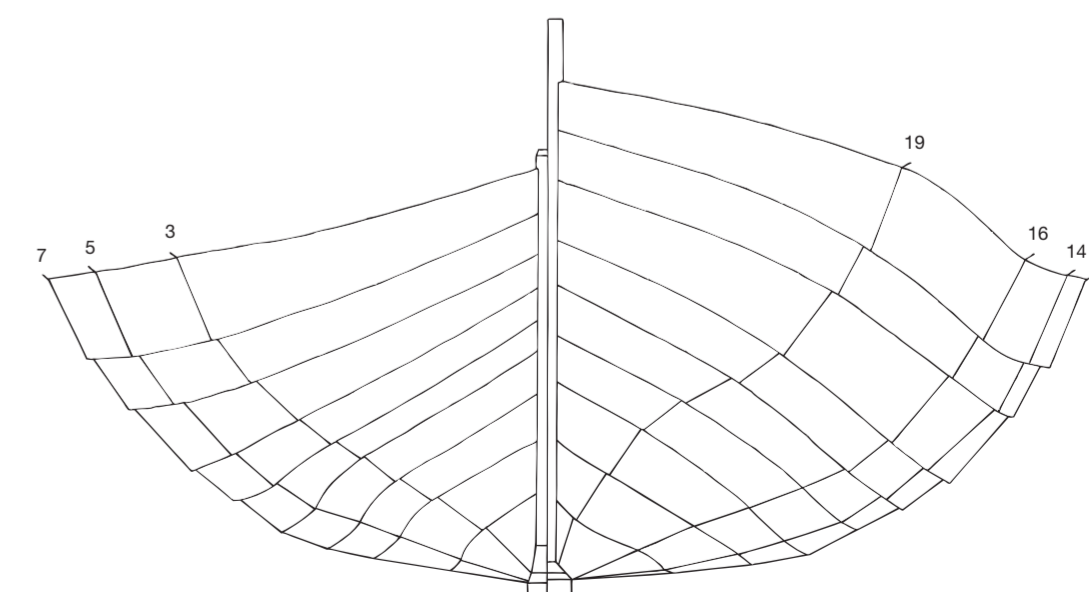
**Scale**











A. Cross-sections



B. Lines/planking drawing



Legend

-  Keel plank, stern- and stemhooks, stern- and stemposts, mortised sill
-  Bottom planking, cross connection, topside crossbeam, (deck) knee
-  Planking of the sides
-  Inwale, load-bed /workfloor, bulkhead
-  Frames, decks, deck beams
-  Cross-cut wood
-  Detached timber
-  Frame number

Reconstruction drawings

- A. Cross-sections.
- B. Lines/planking drawing; on the left, the interior view of the afterbody; on the right, of the forebody.

Scale

